

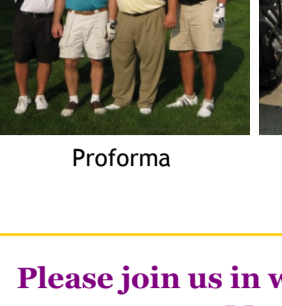


5th Annual Golf Outing Follow-Up September 25, 2008

Volume 3, Issue 4 November 2008

The MEDC held it's 5th Annual Golf Outing at Blackberry Oaks Golf Course. It was a beautiful day, and we had a great turn out. Many thanks to our volunteers for the day and our many sponsors. Thank you to Proforma Awards, Print & Promotions for working with us on the design of our Ashworth Windshirt, and supplying each attendant with a golf towel. Thank you again, to our Event Sponsor, Harris NA, and welcome to Montgomery!

In this issue:
• 5th Annual Golf Outing
• New Montgomery Stores
• New MEDC Members
• Shop Montgomery First!
• Harris NA Opens Branch
Please contact the MEDC with your expansion, relocation, site selection and other business assistance needs.

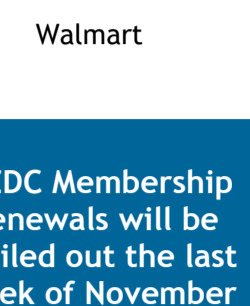
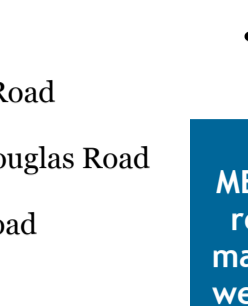
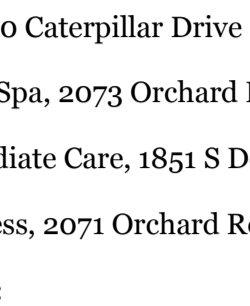
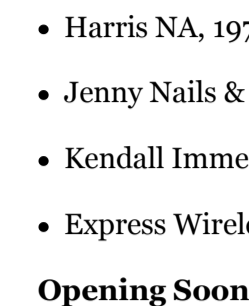


Registration (left): MEDC Director, Amy Furfori, MEDC Executive Assistant, Trisha Wirth & Engineering Enterprises, Inc., Administrative Assistant, Angie Ford

First Place

Tie for Mixed First

Loving Cup



Proforma

Barrett's Ecowater

Old Second National Bank

Berglund Construction

Please join us in welcoming the following new stores to Montgomery:

- Auto Monster, 1404 S E River Road
Harris NA, 1970 Caterpillar Drive
Jenny Nails & Spa, 2073 Orchard Road
Kendall Immediate Care, 1851 S Douglas Road
Express Wireless, 2071 Orchard Road

Opening Soon:

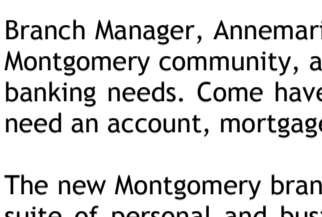
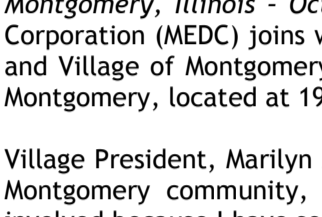
- Earthmover Credit Union, 1260 Ogden Avenue

We are pleased to announce the following new MEDC Members:
Walmart

MEDC Membership renewals will be mailed out the last week of November and are due Jan 31, 2009.

MEDC Holds Breakfast Business—Shop Montgomery First!

This Business Breakfast was sponsored by Doug Williams of



The MEDC would like to know more about your industrial business to better assist your needs. Please take this survey at your convenience. We thank you in advance for your survey participation.

The MEDC held its second Business Breakfast Meeting on September 18, 2008. Fellow business owners, stakeholders, MEDC members, and Kay Hatcher (now elected as the Representative for the 50th District, Illinois), joined Executive Director, Amy Furfori to discuss various ideas on how to promote shopping within Montgomery. Director Furfori reviewed the MEDC membership and advised that the MEDC offers many services to support existing businesses and attract new business, acting as liaison between the businesses and the Village.

Brainstorming among the participants revealed how the MEDC can aid in keeping shoppers in Montgomery. Of the many ideas expressed, the MEDC has taken action on creating a categorized business directory. This information is available via download from the website at: www.montgomery-illinois.org. Working with various businesses, Shop Montgomery First! coupons are available from November 24-December 24 to shop in Montgomery. These coupons also are available through download from our website, at the MEDC office, and through participating businesses. If you are a Montgomery business, and you would like to join our campaign, please contact the MEDC office at 630.897.6748.

Harris N.A. Opens Branch in Montgomery

Montgomery, Illinois - October 14, 2008 - The Montgomery Economic Development Corporation (MEDC) joins with the Montgomery Area Chamber of Commerce (GMACC) and Village of Montgomery in a ribbon cutting ceremony to welcome Harris N.A. to Montgomery, located at 1970 Caterpillar Drive.

Village President, Marilyn Michelini, said "I am very happy to have Harris part of the Montgomery community, especially an involved part. I know the Harris team is involved because I have seen them in the Village already."

Branch Manager, Annemarie Winter, commented "We are pleased to be a part of the Montgomery community, and our experienced team is proud to help you with all your banking needs. Come have the 'ultimate customer service experience' whether you need an account, mortgage, bridge or construction loan, or home equity loan."

The new Montgomery branch features easy parking, three drive-thru lanes, and a full suite of personal and business banking products. Harris has over 125 years serving clients and was founded on the principles of honest and fair dealing. With a well-earned reputation for stability, Harris has a strong capital base and a long history of disciplined asset allocation.

Harris Regional President, Bill Johnson, explained that in this worrisome time for banks, Harris is proud to be strong and well capitalized. He noted that a rate of 6% is considered good and Harris is over 10% which makes their current and potential customers feel good about banking at Harris. They are happy to be neighbors with the retail growth in Montgomery, especially Walmart Supercenter.

MEDC Executive Director, Amy Furfori, said "I know Harris chose this site near Orchard Road and Route 30 at Caterpillar Drive very carefully - for short and long term success. Harris knows they will serve their existing customers well with this location and of course provide the full range of banking for new customers in Montgomery. Harris has been a great contributor, supporting economic development and the existing Montgomery business base, with their contributions of time and funding to the Montgomery Economic Development Corporation (MEDC), the chamber and other community needs."

Alice Sutcliff, President of the GMACC, said, "The Montgomery Chamber is thrilled that the new Harris Branch chose the Orchard Road location. They will be an asset to that area. We thank them for all the support they have given the Montgomery Chamber for all of our events. Their sponsorships are greatly appreciated and they are a great team to work with."

Is your company experiencing a "Talent Gap"? - If you are looking for that pot of gold to train your employees, we can help you find it! Is your business in one of these fields - Finance & Insurance, Healthcare, Hospitality, Information Technology, Manufacturing, Retail, Transportation, or Warehousing & Logistics? Funding is available for 50 - 90% of training costs up to \$20,000 per employer. Contact our grant manager today at 630-859-9923 or link here. Funded through the Workforce Investment Act/River Valley Workforce Investment Board - Equal Opportunity

To remove your name from our mailing list, please click here.
Questions or comments? E-mail us at : medc@montgomery-illinois.org or call at: 630.897.6748